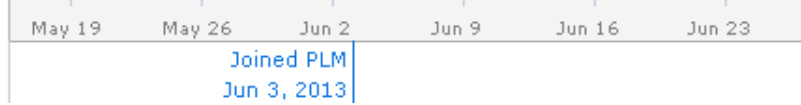


# patientslikeme® doctor visit sheet

Male, 20 years

Condition: **Crohn's Disease** (2 years)

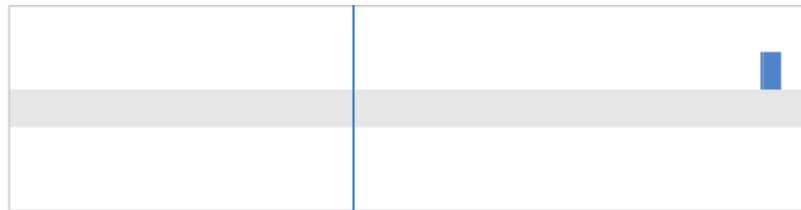
from May 15, 2013



to Jun 27, 2013

## InstantMe

- Very Good
- Good
- Neutral
- Bad
- Very Bad



**Good**

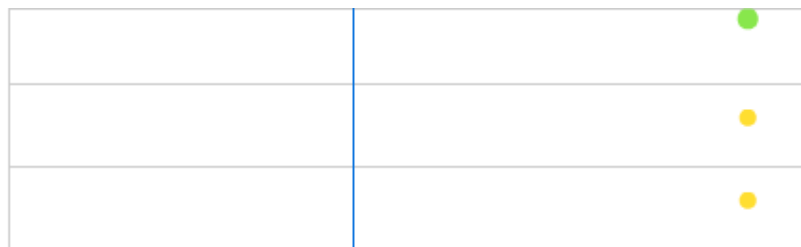
Jun 24, 2013 4:37 PM

[More](#)

Daily self-reported answers to the question "How are you feeling now?"

## Quality of Life

- Best
- Good
- Bad
- Worst



**Social: Best**

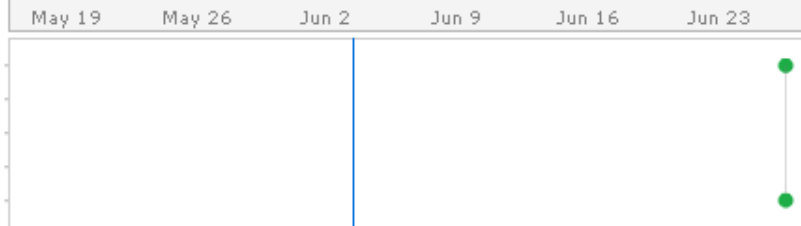
Last update:  
Jun 24, 2013

**Mental: Good**

**Physical: Good**

The PatientsLikeMe Quality of Life scale is a self-report measure that asks patients to rate how much their health has interfered in their physical, mental, and social function. Higher scores represent higher levels of function.

## Labs & Tests



**120 mmHg / 80 mmHg**

Last score

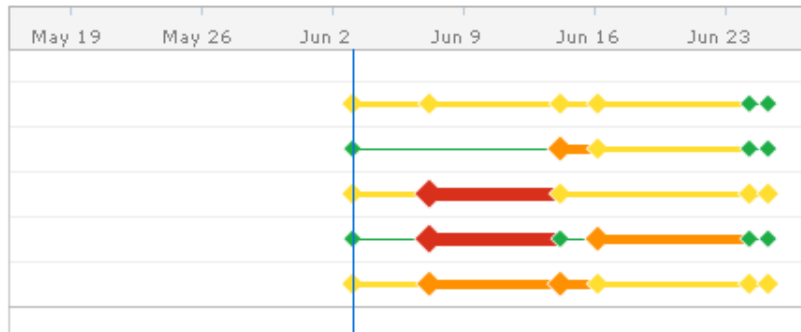
Last update:  
Jun 26, 2013

Blood pressure refers to the force exerted by circulating blood on the walls of blood vessels, and constitutes one of the principal vital signs. Blood pressure is always given as two numbers — systolic pressure (when the heart beats) and diastolic pressure (when the heart relaxes). When the measurements are written down, systolic is the first number and diastolic is the the second.

## Symptoms

Severity of symptoms

- None
- Mild
- Moderate
- Severe



### General Symptoms

Anxious mood

Depressed mood

Fatigue

Insomnia

Pain

### Crohn's Disease

## Weight

- 152 lb
- Obese (BMI>30) 148 lb
- Warning (BMI>25) 144 lb
- Healthy 140 lb
- Underweight (BMI<18.5) 136 lb



**145 lb**

Last weight

Last update:  
Jun 26, 2013

## InstantMe Annotations [Hide](#)

Showing 2 InstantMe entries, from May 15, 2013 to Jun 27, 2013

Date/Time	Status	Why?
Jun 24, 2013 4:37 PM	 Good	
Jun 24, 2013 2:07 PM	 Good	

PatientsLikeMe ([www.patientslikeme.com](http://www.patientslikeme.com)) is the leading online health community for patients with life-changing conditions. PatientsLikeMe creates new knowledge by charting the real-world course of disease through the shared experiences of patients with Multiple Sclerosis, Fibromyalgia and over 1000 other conditions. While patients interact to help improve their outcomes, the data they provide helps researchers learn how these diseases act in the real world. PatientsLikeMe endeavors to create the largest repository of real-world disease information to help accelerate the discovery of new, more effective treatments.